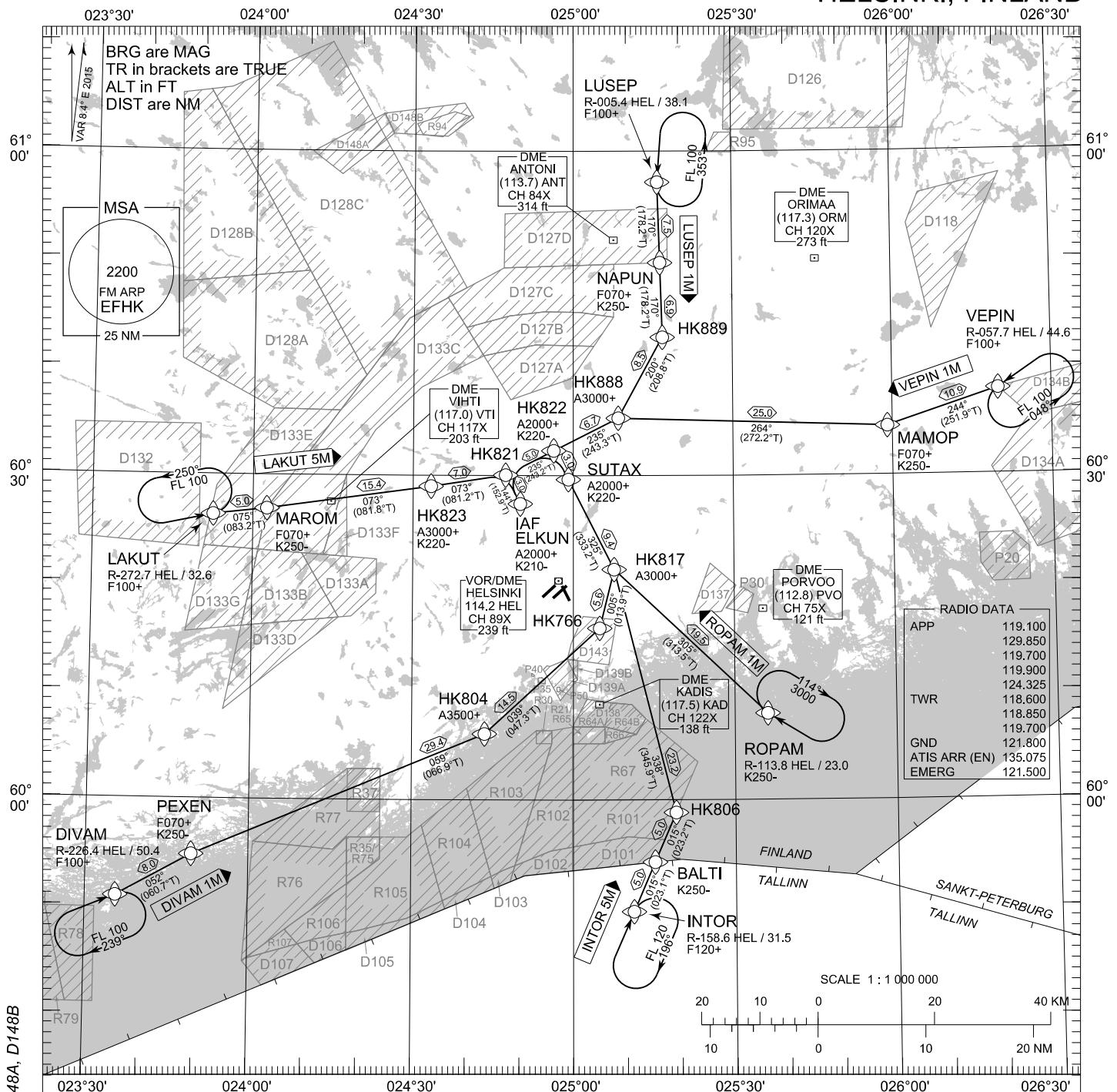


STANDARD ARRIVAL CHART INSTRUMENT (STAR) - ICAO

TRANSITION ALT
5000

RNAV (DME/DME or GNSS) STAR RWY 15
HELSINKI-VANTAA AERODROME
HELSINKI, FINLAND



RNAV STAR RWY 15

DIVAM 1M INTOR 5M LAKUT 5M LUSEP 1M ROPAM 1M VEPIN 1M

NAV SPECIFICATION: RNAV 1 OR P-RNAV APPROVAL REQUIRED. OTHERWISE ADVISE ATC.

DME/DME OPS: MORE THAN 2 DME INPUTS CANNOT BE GUARANTEED AT ALL TIMES.

AREA MNM ALT: SEE AMA INDEX, AIP ENR 6.1 - 3

ROUTES: RNAV PROC CODING ON THE VERSO OF THE CHART.

STAR MUST BE FLOWN ACCORDING TO THE DEFINED WAYPOINT SEQUENCE UNTIL THE LAST WAYPOINT. SEPARATE CLEARANCE TO INBOUND IS NOT REQUIRED.

ATC WILL GIVE DESCENT CLEARANCES.

WPT CONSTRAINTS: ALT / FL / SPEED CONSTRAINTS MUST ALWAYS BE FOLLOWED AS PUBLISHED UNLESS EXPLICITLY CANCELLED BY ATC.

CD OPS: BY ATC CLR IF TFC PERMITS. PLAN CD PATH ACCORDING TO STAR.

RCF: SELECT TRANSPONDER CODE 7600.

RNAV STAR HAS BEEN GIVEN AND ACKNOWLEDGED: FOLLOW THE STAR TO THE RESPECTIVE RWY AND EXECUTE IAP AND LAND.

DURING RADAR VECTORING BEFORE IAF: PROCEED TO ROPAM HLDG USING LAST ASSIGNED AND ACKNOWLEDGED ALT/FL OR MHA IF HIGHER. LEAVE HLDG ACCORDING TO CURRENT FLIGHT PLAN ETA, USE RNAV STAR TO JOIN IAP AND EXECUTE IAP FOR LAST ACKNOWLEDGED RWY.

AIRCRAFT HAVING TELEPHONE, CALL +358 9 8277 3324.

CHG: ADDN P35, P40, P50, D148A, D148B

EFHK RNAV STAR RWY 15										
RTE NAV SPEC	SEQ NR	P/T	WPT		MAG	GEO TR	DIST NM	Turn Direction	Constraints	
			ID	Flyover					LVL	Speed
DIVAM 1M RNAV 1 or P-RNAV	010	IF	DIVAM	-	-	-	-		F100+	
	020	TF	PEXEN	-	052°	060.7°T	8.0		F070+	K250-
	030	TF	HK804	-	059°	066.9°T	29.4		A3500+	
	040	TF	HK766	-	039°	047.3°T	14.5	L		
	050	TF	HK817	-	005°	013.9°T	5.6	L	A3000+	
	060	TF	SUTAX	-	325°	333.2°T	9.4		A2000+	K220-
	070	TF	HK822	-	325°	333.1°T	3.0	L	A2000+	K220-
	080	TF	HK821	-	235°	243.2°T	5.0	L		
	090	TF	ELKUN	-	144°	152.9°T	3.0		A2000+	K210-

INTOR 5M RNAV 1 or P-RNAV	010	IF	INTOR	-	-	-	-		F120+	
	020	TF	BALTI	-	015°	023.1°T	5.0			K250-
	030	TF	HK806	-	015°	023.2°T	5.0	L		
	040	TF	HK817	-	338°	345.9°T	23.2		A3000+	
	050	TF	SUTAX	-	325°	333.2°T	9.4		A2000+	K220-
	060	TF	HK822	-	325°	333.1°T	3.0	L	A2000+	K220-
	070	TF	HK821	-	235°	243.2°T	5.0	L		
	080	TF	ELKUN	-	144°	152.9°T	3.0		A2000+	K210-

LAKUT 5M RNAV 1 or P-RNAV	010	IF	LAKUT	-	-	-	-		F100+	
	020	TF	MAROM	-	075°	083.2°T	5.0		F070+	K250-
	030	TF	HK823	-	073°	081.8°T	15.4		A3000+	K220-
	040	TF	HK821	-	073°	081.2°T	7.0	R		
	050	TF	ELKUN	-	144°	152.9°T	3.0		A2000+	K210-

LUSEP 1M RNAV 1 or P-RNAV	010	IF	LUSEP	-	-	-	-		F100+	
	020	TF	NAPUN	-	170°	178.2°T	7.5		F070+	K250-
	030	TF	HK889	-	170°	178.2°T	6.9	R		
	040	TF	HK888	-	200°	208.8°T	8.5	R	A3000+	
	050	TF	HK822	-	235°	243.3°T	6.7		A2000+	K220-
	060	TF	HK821	-	235°	243.2°T	5.0	L		
	070	TF	ELKUN	-	144°	152.9°T	3.0		A2000+	K210-

ROPAM 1M RNAV 1 or P-RNAV	010	IF	ROPAM	-	-	-	-			K250-
	020	TF	HK817	-	305°	313.5°T	19.5		A3000+	
	030	TF	SUTAX	-	325°	333.2°T	9.4		A2000+	K220-
	040	TF	HK822	-	325°	333.1°T	3.0	L	A2000+	K220-
	050	TF	HK821	-	235°	243.2°T	5.0	L		
	060	TF	ELKUN	-	144°	152.9°T	3.0		A2000+	K210-

VEPIN 1M RNAV 1 or P-RNAV	010	IF	VEPIN	-	-	-	-		F100+	
	020	TF	MAMOP	-	244°	251.9°T	10.9		F070+	K250-
	030	TF	HK888	-	264°	272.2°T	25.0	L	A3000+	
	040	TF	HK822	-	235°	243.3°T	6.7		A2000+	K220-
	050	TF	HK821	-	235°	243.2°T	5.0	L		
	060	TF	ELKUN	-	144°	152.9°T	3.0		A2000+	K210-

RNAV Holdings							
ID	INBD TR	INBD MAG	Turn Direction	MAX IAS	MNM HLDG LVL	TIME	DIST NM
DIVAM	067.4°T	059°	Right	230 KT	F100	1 MIN	-
INTOR	023.5°T	016°	Right	230 KT	F120	1 MIN	-
LAKUT	077.9°T	070°	Left	230 KT	F100	1 MIN	-
LUSEP	181.3°T	173°	Left	230 KT	F100	1 MIN	-
ROPAM	302.0°T	294°	Right	230 KT	A3000	1 MIN	-
VEPIN	236.1°T	228°	Left	230 KT	F100	1 MIN	-

WPT COORD
SEE PAGE EFHK AD 2.15 - 1